

PHOTOCELL

ACTIVATION KIT ACCESSORY
FOR AUTOMATIC GATES



DESCRIPTION

The most precise of the activation systems, it does not miss and also has the longest longevity among the various activation systems. It is a pair of uprights with relative barriers connected to the electric gate, one upright is the photocell while the second perfectly aligned is its match with a reflector. If you cut the light beam of the photocell, the gate opens allowing the user to pass through. This product needs at least 1 m² to be able to install it, there must be just the right distance to be effective. The photocell post must be at least 1 m from the electric gate to make a good job, this system is recommended for those who want a long-lasting gate.

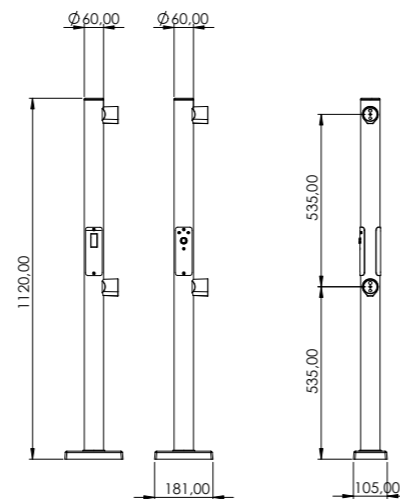
MATERIALS

Structure (std)	chromed or painted steel
Base cover	steel

COLORS & CUSTOMIZATIONS



SIZES - LATERAL VIEWS

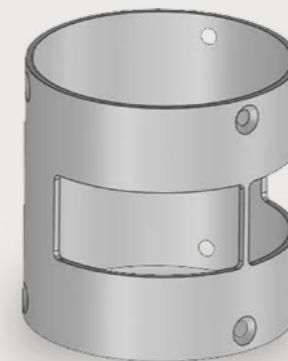


SIZES - TOP VIEWS



RADAR

ACTIVATION KIT ACCESSORY
FOR AUTOMATIC GATES



DESCRIPTION

The radar is one of the most used accessories for electric hatches. Created in the 90s, it innovated the market for its ease of installation and also the clear reduction in space compared to photocell systems which normally occupy 1 metre. The Radar is mounted directly on top of the gate as an add-on kit and takes up no space and is therefore available for sale. For single gate there is also the option of an additional radar to extend the detection range.

MATERIALS

Column (std)	chromed or painted steel
Cap	steel
Protective screen	black painted

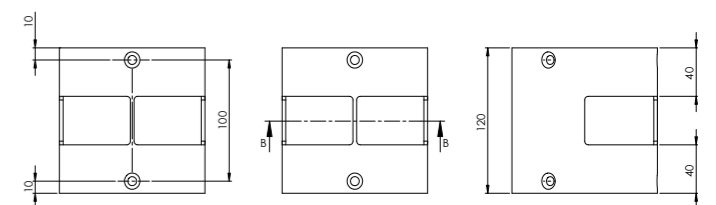
COLORS & CUSTOMIZATIONS



ACCESSORIES

- Additional radar
- Top power supply kit

SIZES - LATERAL VIEWS



SIZES - TOP VIEWS

